

primuswindpower

WIND SITE ASSESSMENT: POWERED BY AWS

NAME

ADDRESS

CITY, STATE Canton, Ohio

LATITUDE 40.876799

LONGITUDE -81.29236

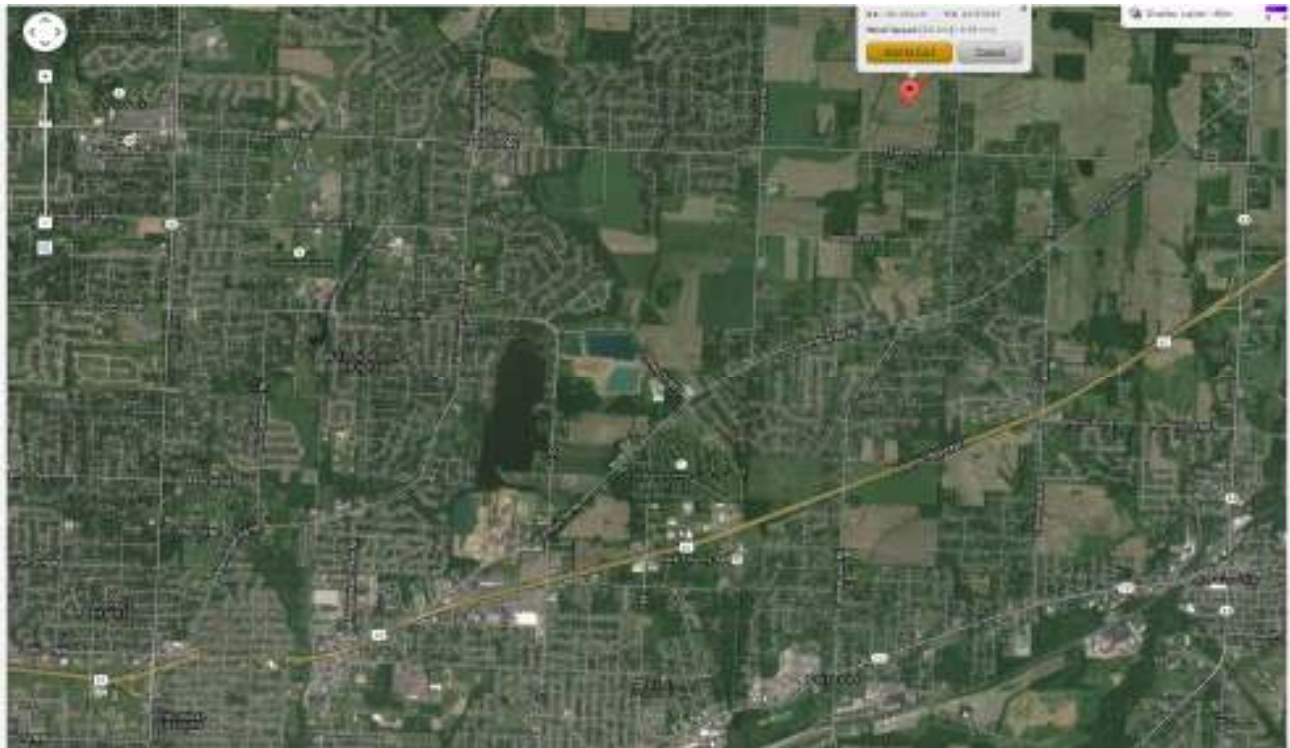
TOWER HEIGHT (FEET) 14

ELEVATION (FEET) 1185

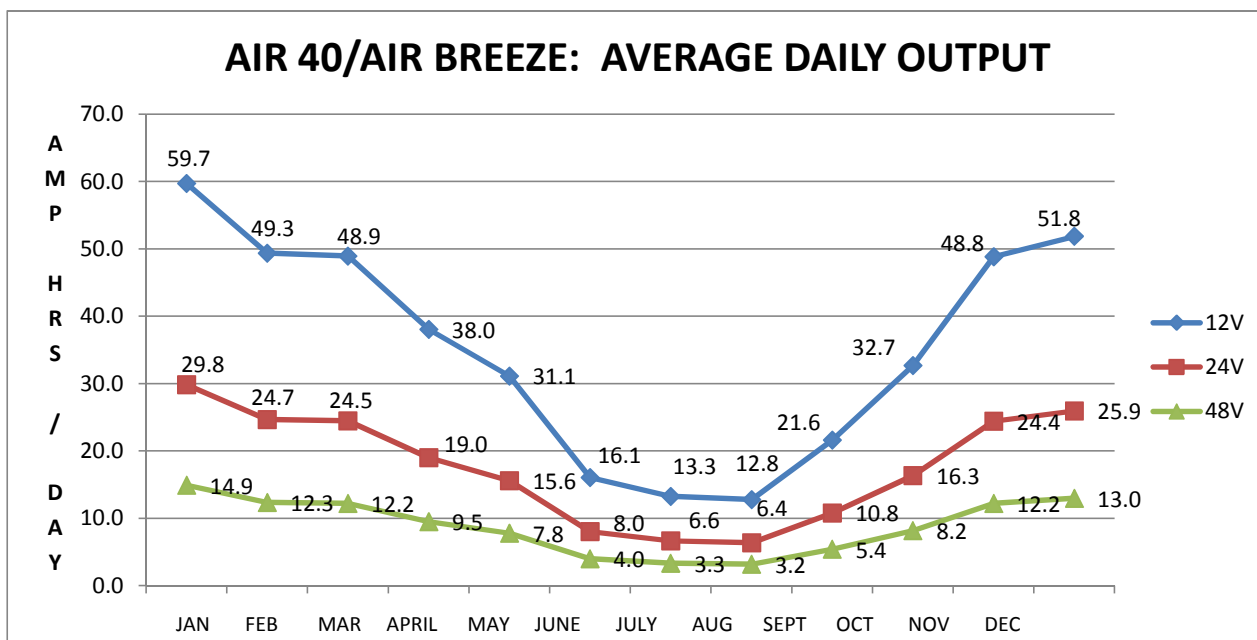
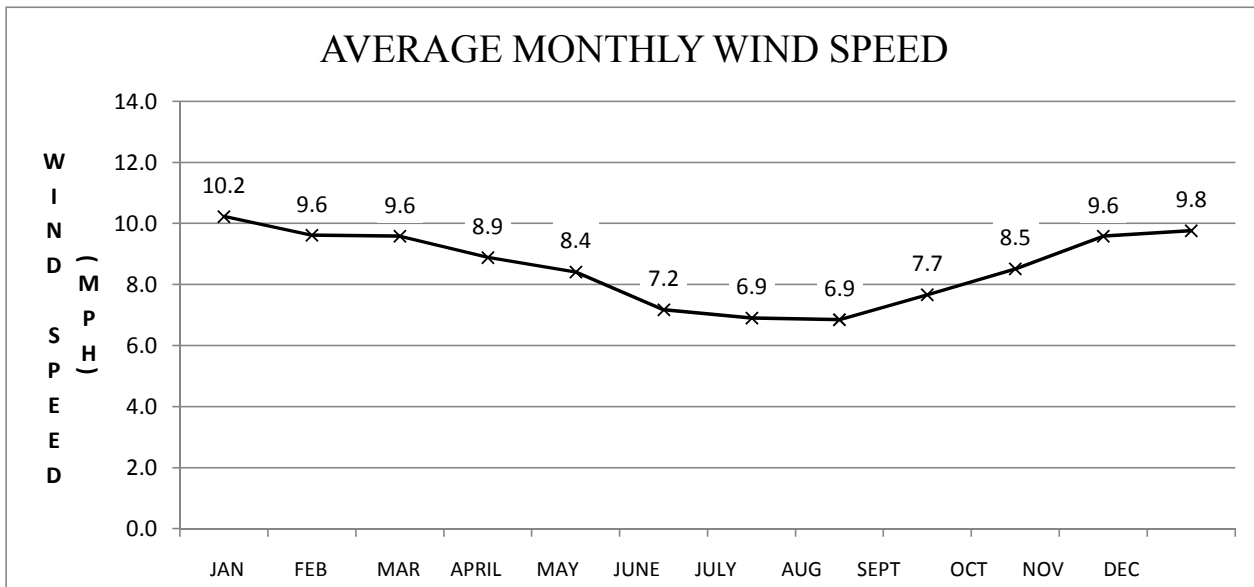
WIND REGIME RATING:

PREDOMINANT WIND DIRECTION: 258.75

LOCATION ANALYZED:



SITE ANALYSIS



Visit www.primuswindpower.com for more information

OR

Ken Kotalik at kkotalik@primuswindpower.com or 928-266-0654