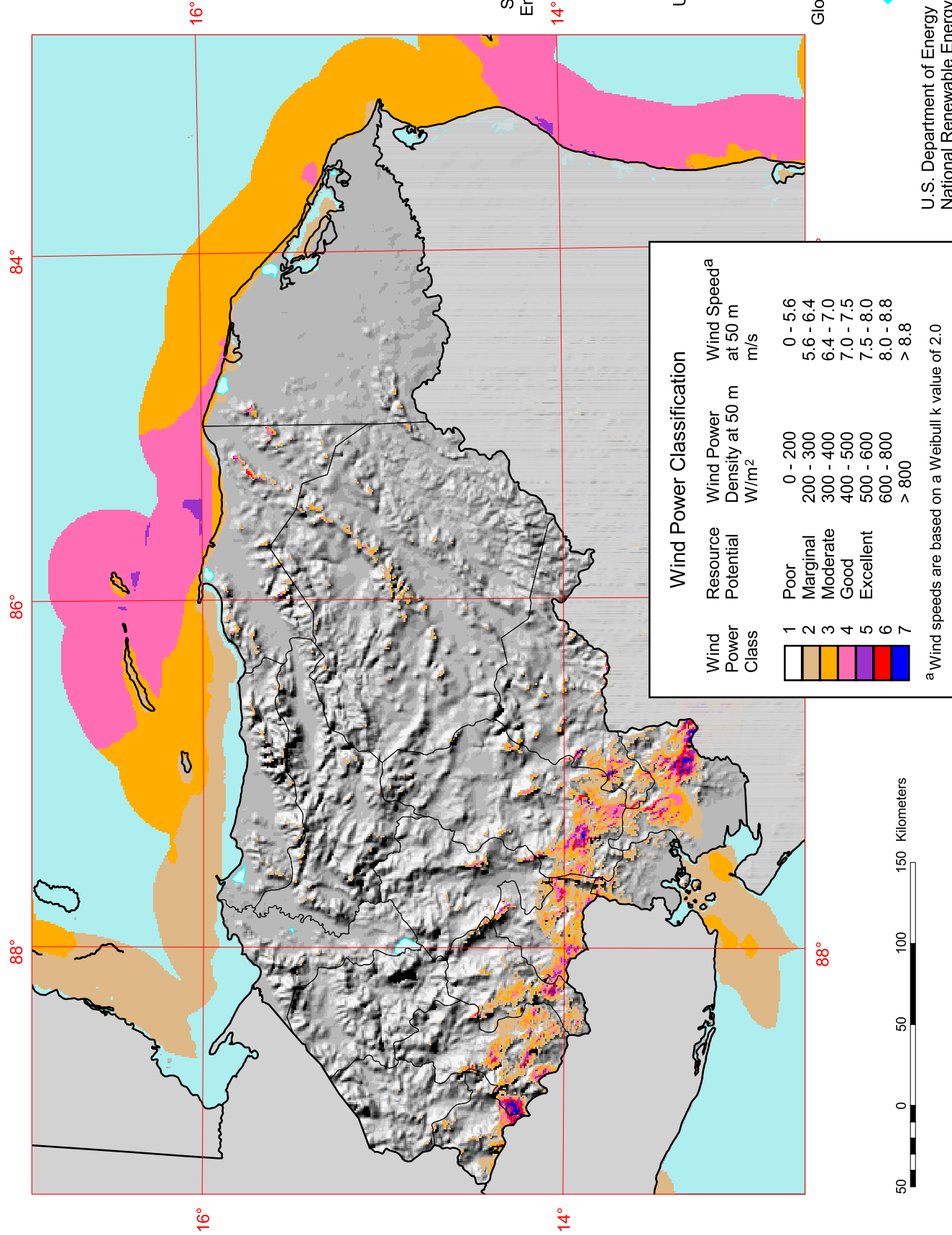


Honduras - 50 m Wind Power



Wind Power Class	Resource Potential	Wind Power Density at 50 m W/m ²	Wind Speed ^a at 50 m m/s
1	Poor	0 - 200	0 - 5.6
2	Marginal	200 - 300	5.6 - 6.4
3	Moderate	300 - 400	6.4 - 7.0
4	Good	400 - 500	7.0 - 7.5
5	Excellent	500 - 600	7.5 - 8.0
6		600 - 800	8.0 - 8.8
7		> 800	> 8.8

^a Wind speeds are based on a Weibull k value of 2.0

SWERA
Solar and Wind Energy Resource Assessment

UNEP
United Nations Environment Programme

Global Environment Facility

NREL
National Renewable Energy Laboratory

U.S. Department of Energy
National Renewable Energy Laboratory